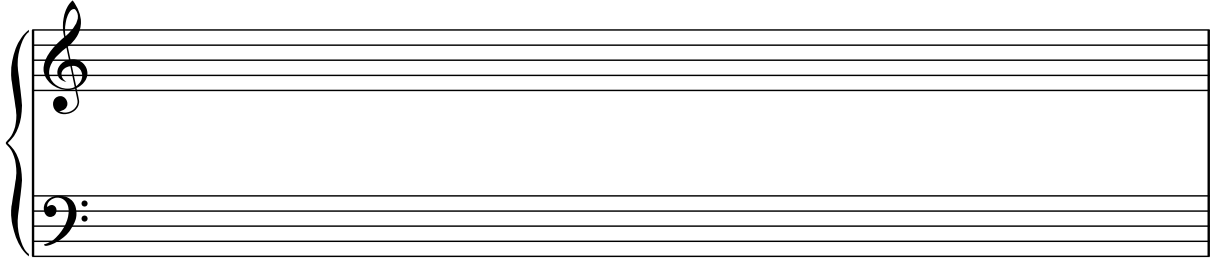
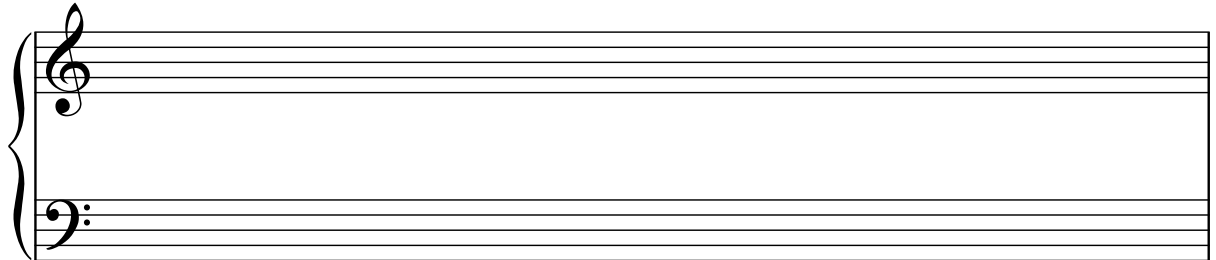


Write out the indicated scale, indicating the whole-step, half step pattern for each scale degree. Remember to 1. write the letter names, 2. write the whole step, half step pattern, 3. add the #'s and b's. Then, write the scale on the staff. Remember the accidental is placed in FRONT of the note on the staff.

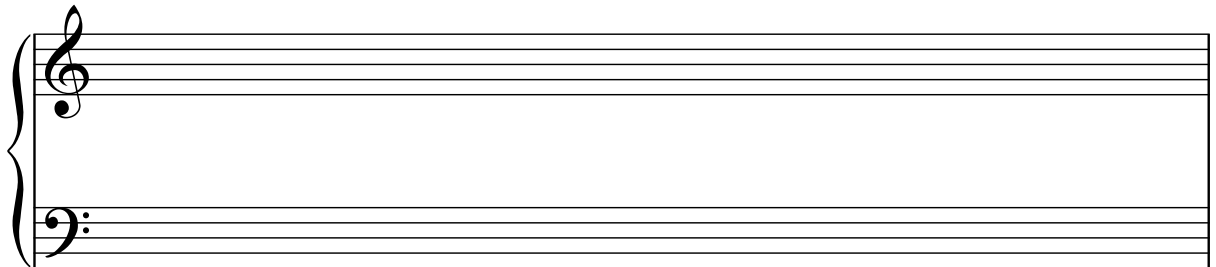
1. C



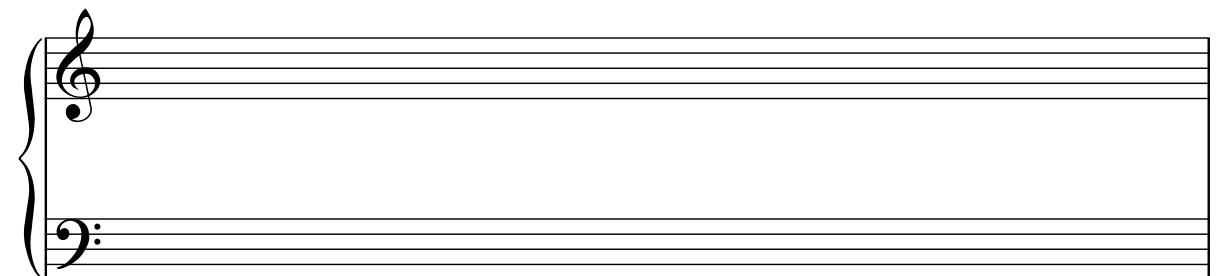
2. F



3. Bb

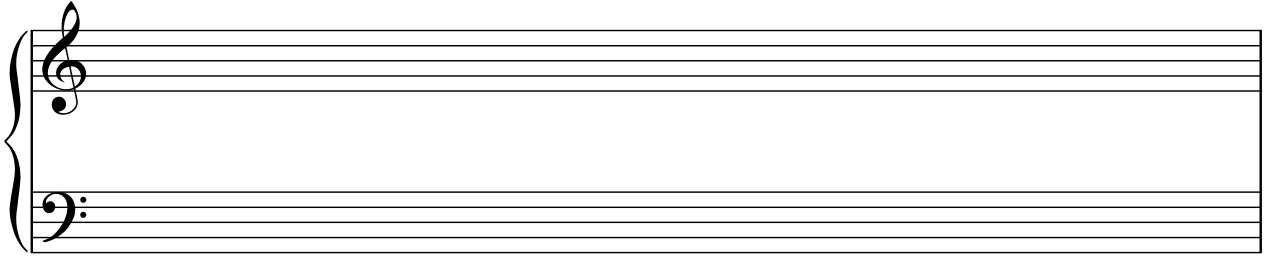


4. Eb

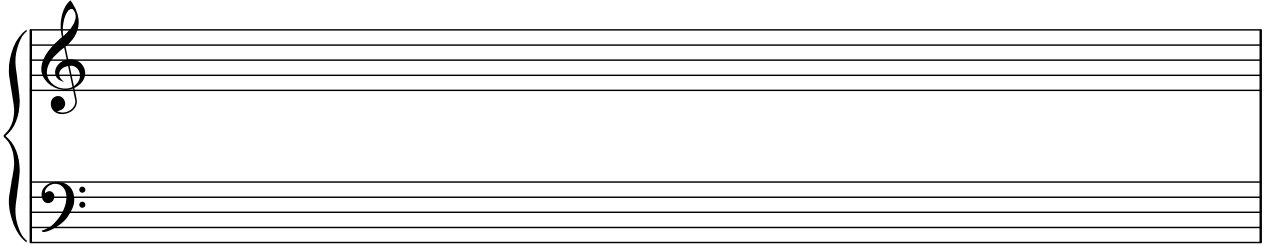


Linear Theory 2 (p2)

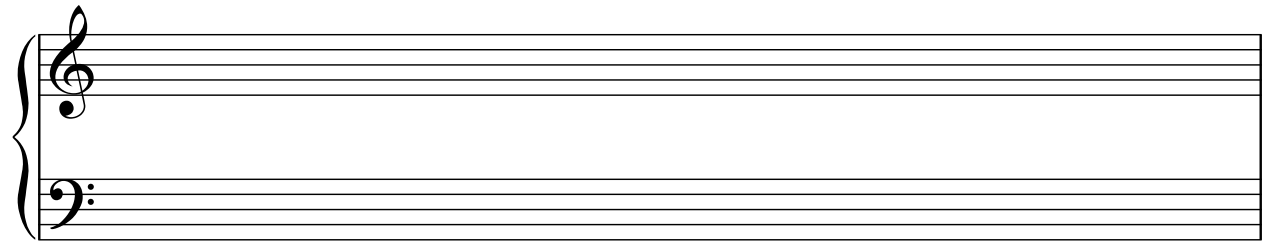
2
5. Ab



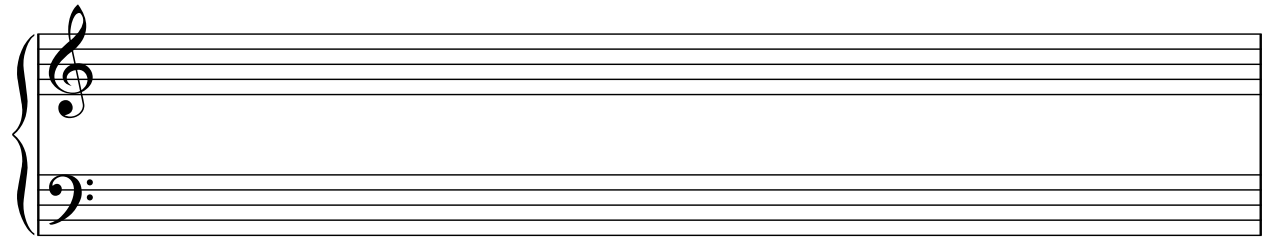
6. Db



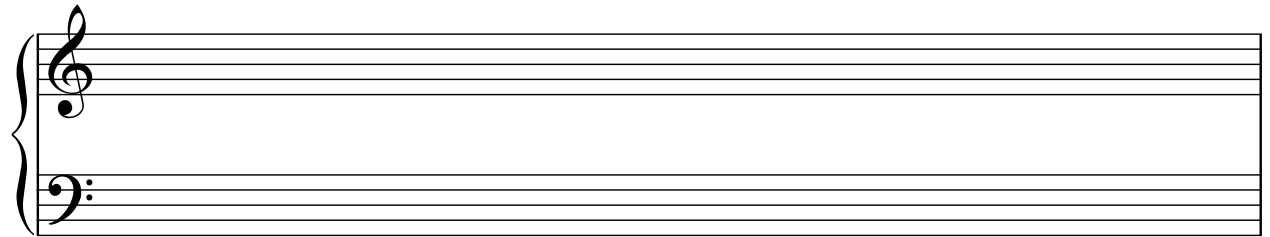
7. G



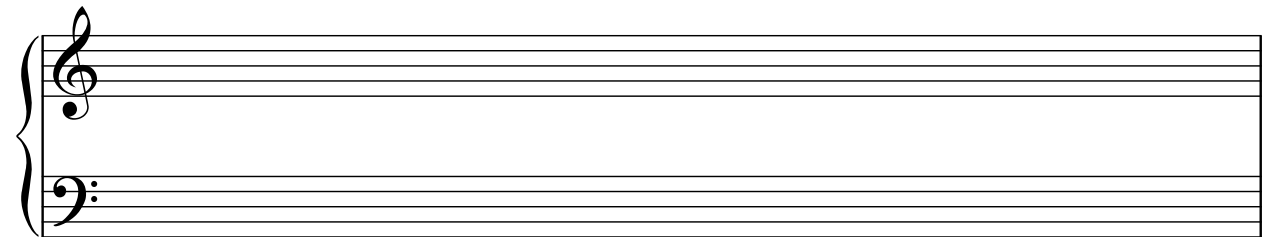
8. D



9. A

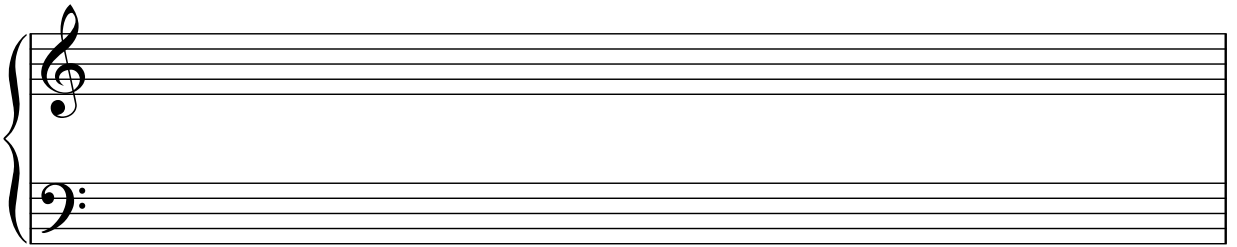


10. E



Linear Theory 2 (p3)

11. B



12. F#

