

A Key signature is used to indicate the sharps or flats needed to form a given scale or key. It takes the place of individual sharps or flats placed before the notes of the scale.

Sharp symbols are always placed in the following order:
F-C-G-D-A-E-B

Flat symbols are always placed in the following order:
B-E-A-D-G-C-F

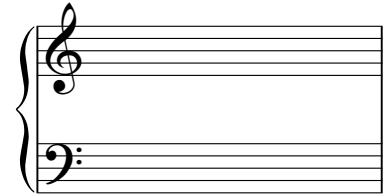
C is the tonic of a major key signature with no sharps or flats.

Enharmonic Keys are those that can be commonly called by 2 different names and are found at the bottom of the circle of 5ths.

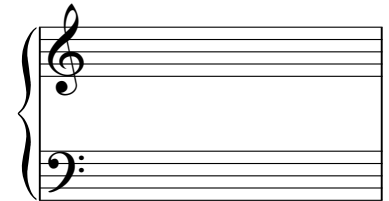
Use the circle of 5ths like a calculator to help you with key signature issues. It gives you the number of sharps or flats and the major and minor key designations in order.

Write the key signature for the following keys

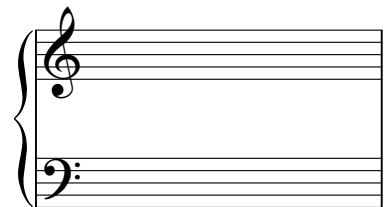
1. C



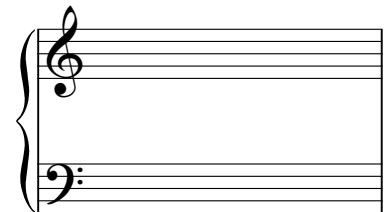
2. F



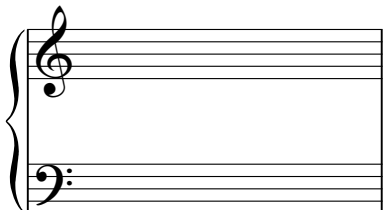
3. Bb



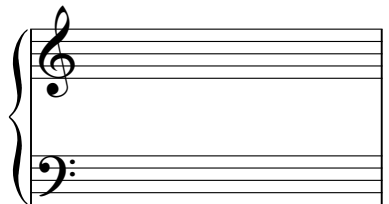
4. Eb



5. Ab

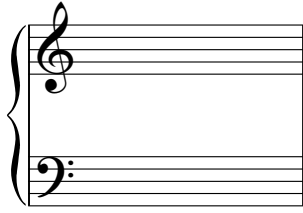


6. Db



2 Linear 3 (p2)

7. G



8. D



9. A



10. E



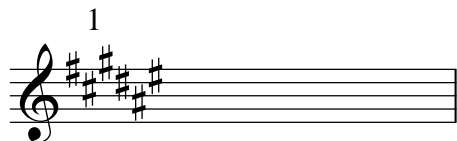
11. B



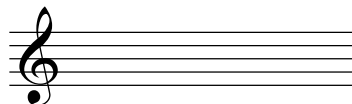
12. F#



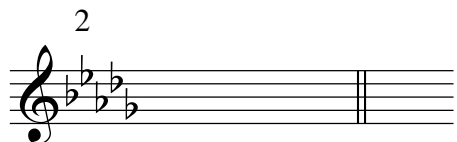
Name the given key signature and then draw and identify the ENHARMONIC key signature.



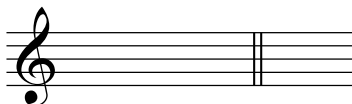
_____ Major



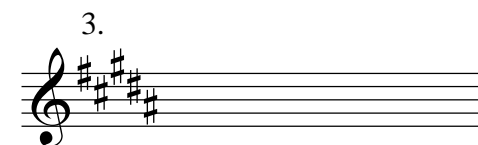
_____ Major



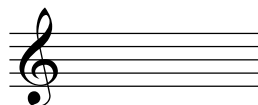
_____ Major



_____ Major



_____ Major



_____ Major

Study the sharps and flats in the scale that is given and write in the appropriate key signature

